

June 2026

THE HOUSEHOLDER BULLETIN

The Monthly Newsletter of Leut Services, P.C.

RETIREMENT ANNOUNCEMENT DANEEN PETTY



she will
bee
missed



Help us celebrate Daneen's years of hard work and dedication as she approaches retirement on June 30 by showering her with cards.

Send cards to:
Daneen Petty
P.O. Box 138
Bristol, SD 57219



A NOTE FROM YOUR *Attorney*

It is with great honor and privilege that I announce Daneen's retirement. Although one individual may refer to Daneen as my "partner in crime," at Leut Services, we call her our consigliere. What is a consigliere? It is a trusted, high-ranking advisor to a crime family boss in the mafia. Although we are not the mafia and I am not a crime boss (*some may disagree*), Daneen is my trusted strategist, counselor, and advisor. Her Las Vegas roots made this term of endearment a perfect fit. In honor of her departure, I would like to share three life lessons Daneen has taught me.

1. If at first you do not succeed, pivot!

If you are a fan of the TV show *Friends*, you are probably familiar with the iconic pivot scene. This was one of the first life lessons Daneen taught me, amid an oversized permit project involving three states. If at first you do not succeed, pivot. Life is all about tackling challenges, and most issues do not have a (*continued on next page*)

INSIDE THIS ISSUE:

- 1** Note from Your Attorney
- 2** Note cont.
Farewell from Daneen
- 3** DYK w/ Joe
Screwworm in U.S.
- 4** Hello, Laney!
SD Run-off Election
- 5** Contractor Licenses
Immigration Changes
- 6** Recipe of the Month
Events & Activities

(Note from Your Attorney continued)

straightforward path to a solution. In my opinion, an attorney is essentially a professional problem solver. You are presented a set of facts— some of which are helpful, while others are... *insert face palm.* Throughout my journey as a professional problem solver, I have encountered multiple issues where Billy Mays figuratively leans over my shoulder and exclaims, “BUT WAIT, THERE’S MORE!” And when those situations pop up, Daneen reminds me to pause, take a step back, and reassess the issue. The map to success is not a linear path. It may require you to pivot to take one giant leap forward.

2. Stop trying to control the universe.

As an attorney, you can tend to become engrossed in your clients’ problems, making their problems feel like your own. When you genuinely care about clients and want them to succeed, it can cause a significant amount of stress. For instance, when a client receives a hefty fine or experiences discrimination, it’s natural to take the situation to heart. You can find yourself wanting to control every aspect of the situation; you want to control the universe. Stop. Regardless of how much you plan and try to avert problems, unforeseen circumstances inevitably arise. We must remember that we cannot control the universe. As an attorney, our clients pay me for advice. It is our responsibility to inform and educate them on the law, but it is their responsibility to follow it. Sometimes life lessons come at a cost. But life is a lot more enjoyable when you do your best and let God do the rest.

3. Be like a bison, face the storm.

At one point in 2023, I told Daneen that I planned to work at one law firm for the rest of my life. I am someone who deeply values commitment. Plus, many of my mentors and role models had predominantly spent their lives with one employer. Her reaction? She looked at me like I had three heads. Unfortunately, I had mistaken a commitment to a place for a commitment to a purpose. About six months later, Leut Services was formed. Throughout that period and the following year, Daneen shared a powerful

metaphor featuring a bison. Unlike other animals, such as cattle, a bison will literally face winter storms head-on, even walking directly into them. Their biological design— a massive head, thick coat, and powerful shoulders— enables this behavior. By confronting the storm, it passes more quickly. Those who are close to me are aware of the challenges I faced before and after forming Leut Services. While that blizzard was man-made (no pun intended 😊), Daneen consistently reminded me that the fastest way out of the storm— and the one that would leave me better off— was to confront it directly. While most of my current storms don’t appear to originate from the Aberdeen area, I continually remind myself that you are better off being like a bison: face your challenges head-on. Fortunately for Daneen, I do not have three heads. I am incredibly blessed and grateful that she took a leap of faith to become my first employee. Thank you for all the life lessons you have taught me and will continue to teach me as a dear friend. I promise to keep this one head screwed on straight. *“Some believe that when Scripture states that there is a season for everything, it implies that life experiences are not by incident but rather allowed by God with great purpose and intention.”* – Darien Duchesne. As always, **Consult Your Attorney.**

Kiera Liddy

FAREWELL

“To everything there is a season, and a time to every purpose under heaven.” Our friend Darien Duchesne reminded us of this in 2024, and this has certainly proven true in my own life. My season with Leut is now turning into a time for me to retire and focus on things of the heart and spirit. While this transition is bittersweet, I am deeply grateful to Kiera for allowing me to help launch a business driven by a mission to work from the heart—not just for profit. Ending my career this way has been incredibly satisfying, and it was a true blessing to serve the best clients in South Dakota! I will miss you all every day, as I have come to view you as dear friends. I invite you to keep in touch if you are inclined. **I wish you every blessing. Take good care!**

- Daneen

DID YOU KNOW with Grandpa Joe

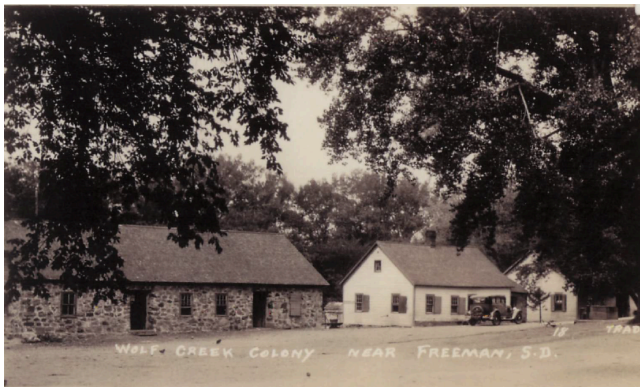
Nestled along the James River sits Wolf Creek Colony. First settled by Dariusleuts in 1875, Wolf Creek Colony was reestablished by Schmeideleuts of Tschetter Colony in 1963. Today, Wolf Creek raises hogs and crops. It also processes soybeans for farmers in the area. Wolf Creek is also big in manufacturing, including tallow lotion, toilet paper, exhaust fans for livestock barns, polybins for livestock feed, mineral and lick tubs, and so much more! Wolf Creek has two daughters: Spring Lake and Rustic Acres.



A scene from the Jim River



Pr. Paul Decker's house, built by the Dariusleuts



More houses built by the Dariusleuts



2019 flood at Wolf Creek

SCREWWORM ENTERS U.S.

The New World screwworm parasite was detected in South Texas on June 3, 2026. A calf on a ranch near La Pryor, Texas, tested positive. La Pryor is about 30 miles from the Mexico border. This is a flesh-eating parasite that can cause long-term consequences to the already diminished U.S. cattle supply. It is estimated that a screwworm outbreak could cause \$1.8 billion of damage to the Texas economy and raise U.S. beef prices. To prevent the spread from Mexico, the U.S. has kept its border closed to cattle imports for more than a year. The USDA has been releasing sterile flies to suppress the spread. Screwworm females lay eggs in the wounds of warm-blooded animals. When the eggs hatch, hundreds of larvae use their sharp mouths to burrow through flesh, killing their host if left untreated.

BUTLER EXPANDS

Butler Machinery plans to expand in North Dakota. Since 1955, Butler has sold machinery to farmers across the Midwest. Now, with 20 locations in Montana, North Dakota, South Dakota, Minnesota, and Nebraska, it will build a facility near Mapleton, ND. This facility will allow Butler to keep up with inventory and parts. It will sit on 20 acres and allow for future growth. Completion is projected for the end of 2027.

SOUTH DAKOTA: HOG HAVEN

South Dakota leads the nation in hog inventory growth. Since 2015, South Dakota's hog inventory has increased by 61%, putting hogs at 2.19 million in 2025. This was the highest increase in the nation, with Texas coming in at second with a 32.6% increase. For comparison, neighboring states of Minnesota have 9.3 million hogs, and Iowa houses 24.7 million head (March 2026). Hog research is also increasing in South Dakota. An expansion to the SDSU Swine Education and Research Facility's wean-to-finish barns will be completed in 2026.

READY FOR RUNOFFS

A runoff election for the South Dakota Republican Governor candidate is set to take place on July 28, the last Tuesday of the month. A law passed in 1985 mandates a runoff in political party primary for governor and certain federal offices if there are more than 3 candidates and no one gets at least 35% of the vote. If no candidate gets at least 35% of the vote, the 2 candidates with the most votes face each other in July. Even though the law has been on the books for more than 40 years, this is the first time the law will be put to the test. The July runoff election for the South Dakota Republican Governor Candidate will take place between current Governor Larry Rhoden and Aberdeen businessman Toby Doeden. While their last names may rhyme, their policies and personalities do not. At Leut Services, we are supporting Gov. Larry Rhoden in this election and encourage our readers to do the same. Get out and vote!



SUMMER INTERN LANEY ANDREWS

Please join us in welcoming Laney Andrews as our summer intern. She grew up near Beresford, South Dakota, on her family's cash crop and swine operation. This fall, she will be a sophomore at South Dakota State University, where she studies agricultural economics with a pre-law focus. On campus, she is involved in the Collegiate Farm Bureau, Students' Association, Swine Club, and Lutheran Student Fellowship. This past year, Laney served as a South Dakota Pork Producers Council Swine Ambassador and the 2025-2026 South Dakota FFA Association State Treasurer. We are excited to add her to the team for the summer!



FARMERS FOR SOIL HEALTH

Farmers can now enroll to receive technical assistance in planting cover crops. Farmers for Soil Health is an incentive led by the United Soybean Board, National Corn Growers Association, and the National Pork Board. Twenty states are eligible for the program, including Minnesota, North Dakota, and South Dakota. Enrollment is open to producers growing corn, soybeans, wheat, sorghum, or cotton. Farmers can receive \$35/acre for planting cover crops up to 2,000 acres per year. Technical support is available for seeding methods, termination timing, or integrating cover crops into existing rotations. Learn more about the program by clicking [here](#).

NAILED IT

By Kellie Ripp

Being a contractor in South Dakota looks different than other states. Most states require a general contractor license before starting work. However, qualifications for a contractor in South Dakota are a little “laid back.” In South Dakota, electricians and plumbers are the only contractors who are required to obtain a license from the state. However, all other contractors, like general contractors, need to review city licensing needs before starting work. Examples of towns in South Dakota that have licensing requirements are Aberdeen, Brookings, Pierre, Rapid City, Sioux Falls, and Watertown. Some local requirements include taking an exam, obtaining a bond, paying a fee, providing a copy of your excise tax number, proof of insurance, etc. If you are a contractor outside South Dakota, there are likely state requirements you must meet before beginning work. If you live or work in Minnesota or North Dakota, put the brakes on right away and make sure you have the proper licensing in place. Other surrounding states like Nebraska and Iowa do not require a state-issued contractor’s license, but like South Dakota, there are local requirements. Regardless of whether it is one job or many, make sure to research (or call Leut Services) to see if a contractor’s license is necessary in the state you are planning to construct in.

BASE ACRE INCREASE

For the first time since 2002, farmers can increase their base acres. Due to the One Big Beautiful Bill signed into law in July 2025, farmers can now review and consider base acre increases on farms enrolled in the Agriculture Risk Coverage (ARC) and Price Loss Coverage (PLC) programs. ARC and PLC are commodity safety net programs that provide financial protection to farmers when market prices or revenues decline. Eligible base acres must have been planted during 2019 through 2023 crop years. Farmers must make changes by August 31, 2026. Visit your local FSA office to learn more.

IMMIGRATION CHANGES

Being a citizen of the United States of America is not something to take for granted. The two common steps to become U.S. citizens are to 1) seek a visa and admission from outside the U.S. and 2) apply for an adjustment of status while living in the U.S. The second process is common when an individual comes to the U.S. for school, work, or marries a U.S. citizen living in the U.S. The Courts have routinely recognized the adjustment of status process as an “extraordinary act” of administrative grace. In its May 22, 2026, memorandum, USCIS states that Congress expects foreign individuals paroled into the U.S. or admitted into the U.S. to depart rather than pursue adjustment status. These individuals should pursue an immigrant visa and admission from outside the U.S. if they wish to reside as permanent residents. It appears that USCIS will be heavily scrutinizing adjustment of status applications. This may result in a departure back to your home country. We will be monitoring this situation for further interpretation from the federal government.

COLONIES IN THE NEWS

On July 15, three Hutterite Colonies in south-central South Dakota are partnering with the South Dakota Specialty Producers Association to host a farm bus tour: “Small Farms, Big Ideas: SDSPA Summer Farm Tour Series.” Lakeview Colony, Clearfield Colony, and Pease Creek Colony will showcase unique horticulture practices at their gardens. From caterpillar tunnels to cover crops, sustainable agricultural practices will be on display. The tour costs \$23 per person and includes lunch at Clearfield Colony. Click [here](#) to register for the tour.

RECIPE OF THE MONTH

Baked Cinnamon Crunch French Toast

Serves 8

8 oz spreadable cream cheese

½ cup heavy cream

1 tsp vanilla

1 loaf Brioche bread, challah, or sourdough

8 large eggs, beaten

2 ½ cup whole milk

1 tbs vanilla extract

½ tsp kosher salt

¼ cup, plus 1/3 cup brown sugar

2 ½ tsp ground cinnamon

2 tsp flour

2 tbs salted butter, melted

Line a 9x13-inch baking dish with parchment paper. In a bowl, mix 1/4 cup of brown sugar and 1 teaspoon cinnamon. Sprinkle half the cinnamon sugar over the bottom of the baking dish. Grab two pieces of bread, spread a layer of cream cheese between them to make a sandwich. Press the bottom and sides together. In a large bowl, whisk together the eggs, milk, vanilla, and salt. Submerge each cream cheese sandwich into the egg mix. Arrange the sandwiches in the baking dish. Pour the remaining egg mix over the bread slices. Then sprinkle over the remaining cinnamon sugar. Cover and place in the fridge for 30 minutes. When ready to bake, preheat the oven to 375° F. In a bowl, mix 1/3 cup brown sugar, 1 1/2 teaspoons cinnamon, the flour, and butter. Sprinkle over the bread slices. Cover the pan with foil and bake for 25 minutes, remove the foil and bake another 20-25 minutes or until the French toast is deeply golden. Serve the French toast warm, with maple syrup, whipped cream, and any of your favorite toppings. *Recipe by Half Baked Harvest.*

COLORING PAGE RESULTS

A big thank you to everyone who participated! We received 146 pages. Congratulations to Raegan Wollman, son of Randy and Yvonne, of New Elm Springs Colony, for being drawn for our individual prize, and to Tschetter Colony for the most submissions. Both receive a prize that should help keep them busy on summer break. Look forward to more giveaways this year.



Tune in to Coffee with Kiera on Tuesday, June 16, at 10 a.m. This month's topics: Farm Program Plan, Immigration Changes, and QuickTips. Email or text Kellie for the link. *Available to clients only.*

EVENTS & ACTIVITIES

June 9 // ND Primary Election

June 11 // Seminar for Stewards

June 12 // Glenn Muller's Retirement Party

June 16 // Coffee with Kiera

June 23 // CAFO Training- Huron

June 25-26 // Gov's Ag Summit- Pierre

July 3 // Office Closed

July 15 // SDSPA Summer Tour

July 28 // SD Run-off Election

Aug. 4-6 // MN Farm Fest

Aug. 18-20 // Dakotafest

CONTACT US

Kiera Leddy, Attorney

klededy@leutservicespc.com

605-924-0271

Daneen Petty, Legal Assistant & Compliance Manager

dpetty@leutservicespc.com

702-277-3401

Kellie Ripp, Legal Assistant & Client Coordinator

kripp@leutservicespc.com

605-656-8344

Rebecka Butz, Bookkeeping Specialist

rbutz@leutservicespc.com

605-656-6525

HAPPY ANNIVERSARY



Name: Raegan
Age: 12
Colony: New Elm

MAKING CENTS OUT OF DOLLARS

Foundations for Financial Stewardship

THURSDAY, JUNE 11



10 AM – 3 PM



THE SHOFFICE



JANELLE GUERICKE

Lunch, refreshments, and handouts provided.

RECOMMENDED ATTENDEES:

Officers & Enterprise Managers

RSVP TO KELLIE BY JUNE 4

kripp@leutservicespc.com



SEMINARS
— FOR —
STEWARDS



TOPICS TO ADDRESS

- Financial Fundamentals
- Budgeting
- Crop Marketing Plan
- Servant Leadership (by Kiera)

Janelle Guericke began her career as a high school business teacher before transitioning into a commodity broker at Farmers Trading Company in Mitchell. However, her passion for teaching led her back to the classroom, where she serves as an instructor at Mitchell Tech. Over the years, she has taught ag business subjects in the classroom and has provided farmers with commodity marketing skills. She and her husband live in Alexandria, South Dakota.